

DSV25 VENTURI STEAM TRAP

Description

The Delta 25DSV Venturi Steam Trap is designed for multipurpose applications from line drainage and trace heating, through to medium to large process applications. The 25DSV has an integrated strainer and an in-line removable orifice insert. The body of the 25DSV does not have to be removed from the line for maintenance purposes. Access to the insert and strainers is through the top and bottom caps.

Standards

This product fully complies with the requirements of the European Pressure Equipment Directive 97/23/EC as well as ASME B31.1 and B31.4 and SANS 347:2007.

Certification

Manufacturer's pressure test report and material certification is available with this product. Any additional certification requirements to be stated at time of order.

Sizes and Connections

DN25 (1") Threaded BSP / NPT / Socket Weld

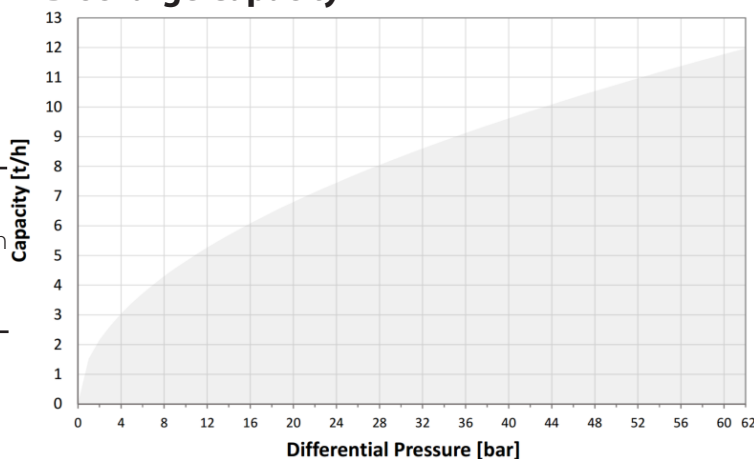
Pressure / Temperature limits

PMA (Maximum Allowable Pressure)	62 bar g	(900psi g)
TMA (Maximum Allowable Temperature)	450°C	(845°F)
PMO (Maximum Operating Pressure)	62 bar g	(900 psig)
TMO (Maximum Operating Temperature)	450°C	(845°F)

Guarantee

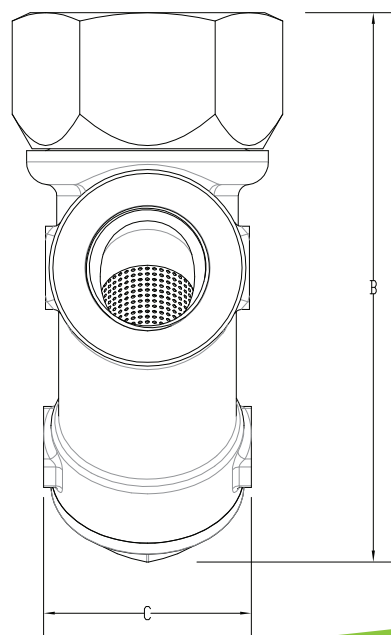
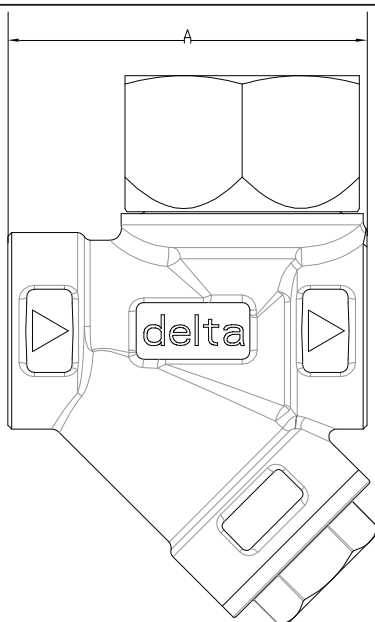
10 year product guarantee as per standard terms and conditions

Discharge Capacity

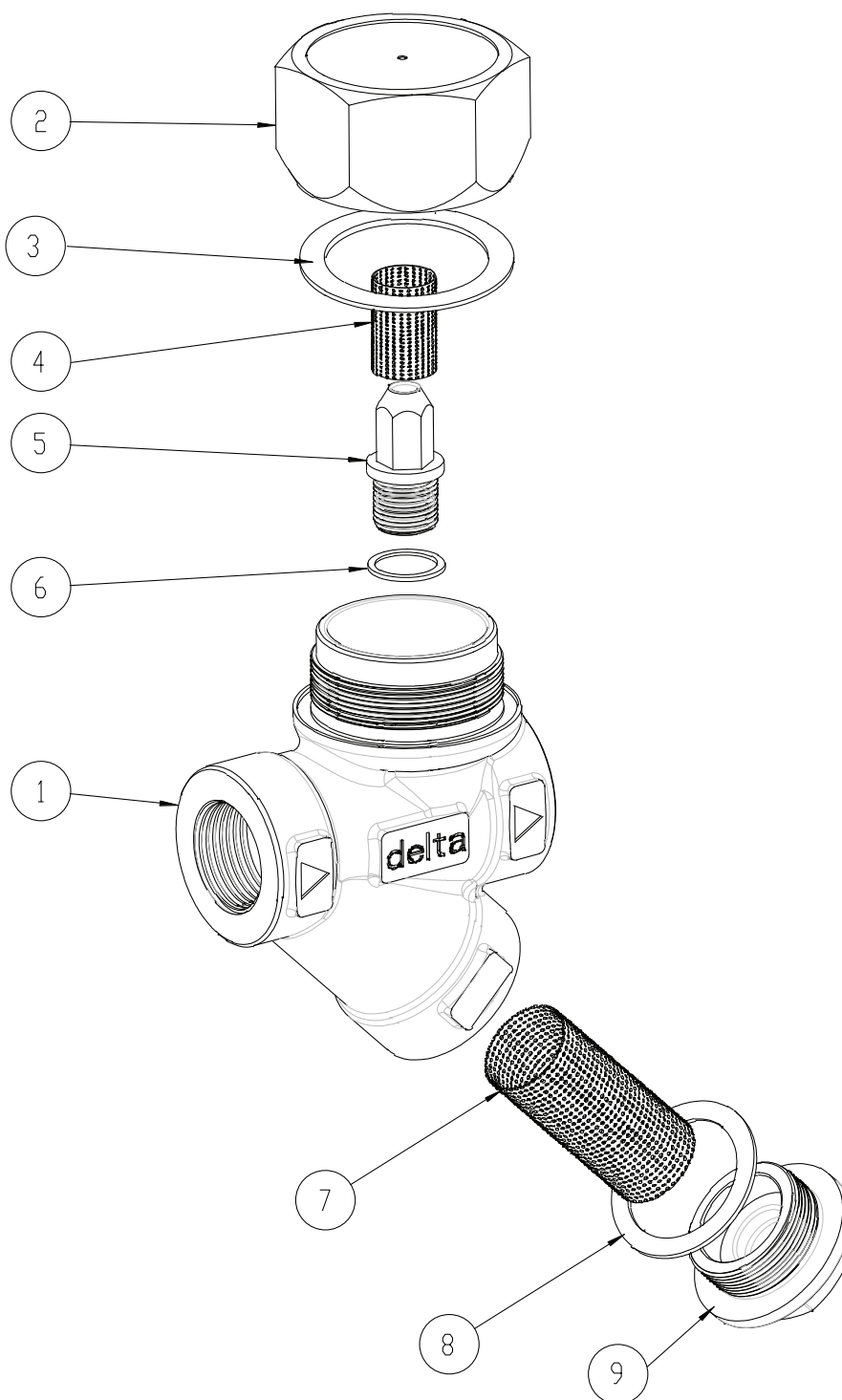


Dimensions and weights

Size	Connection	A	B	C	Weight
DN25 (1")	DN25 Screwed BSP/NPT/Socket Weld	95 mm	143mm	54 mm	2,3 kg



Assembly



No.	Part	Material	No.	Part	Torque Settings
1	Body	ASTM A351 – CF3M	2	Top Cap	80 Nm
2	Top Cap	ASTM A351 – CF3M	5	Removable Orifice Insert	10 Nm
3	Top Gasket	Graphite	9	Bottom Cap	80 Nm
4	Secondary Strainer	316 Stainless Steel			
5	Removable Orifice Insert	304 Stainless Steel			
6	Orifice Gasket	Chemflon			
7	Primary Strainer	316 Stainless Steel			
8	Bottom Gasket	Graphite			
9	Bottom Cap	ASTM A351 – CF3M			

T: +27 21 948 9677

E: info@deltasteamsystems.com

W: www.deltasteamsystems.com